

Sustainability



4	Our Approach
6	Better Portfolio
8	Better Impact
10	Better Experience
12	Environmental Goals
14	Sustainable Products
16	Architectural Products
20	06
24	Silea
28	SEAQUAL
30	Client Highlight: Stanley Center
34	Certifications

Designed to do better.

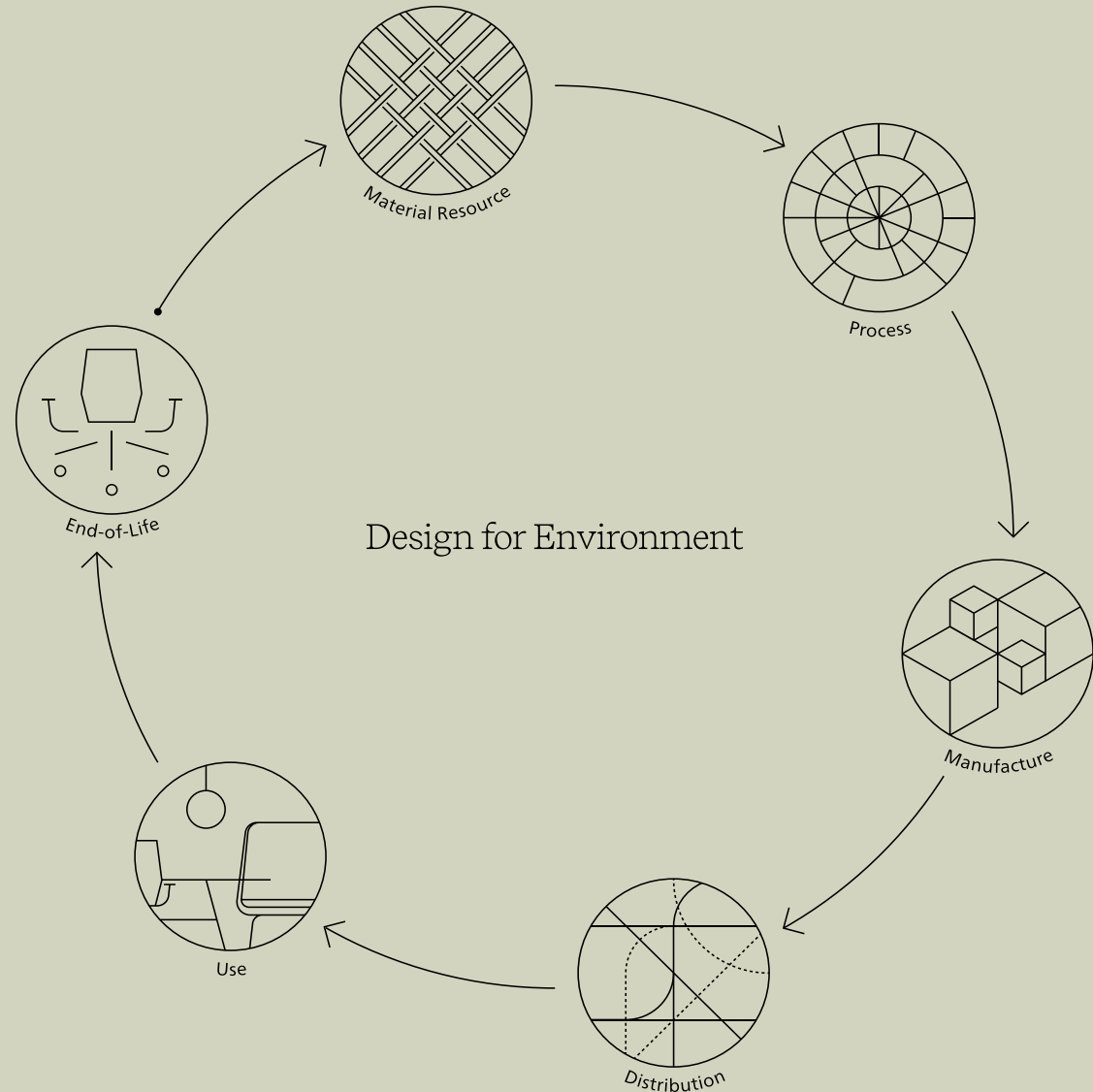
At Allsteel, we're focusing our commitment to sustainability by building a better portfolio with better impact that can create a better experience.

Humans are at the heart of everything we do at Allsteel. Caring for our people, and yours, is what makes us human. So before we make decisions or take action, we start with a question: How can we do better? By designing to do better, we enhance experiences, increase confidence, and help sustain a better world for us all.



Better Portfolio

Better portfolio means we're advancing the sustainability of our entire range of solutions through our Design for Environment process.



We're using simple tools such as life cycle assessments, independent third-party certifications, and stringent durability testing to demonstrate our progress not only to ourselves but to our clients. And it's making it simpler for people to choose better.

Our Design for Environment process enables us to plan for circularity advancements, embodied carbon reductions, improved chemistry and third-party certifications that our customers need.

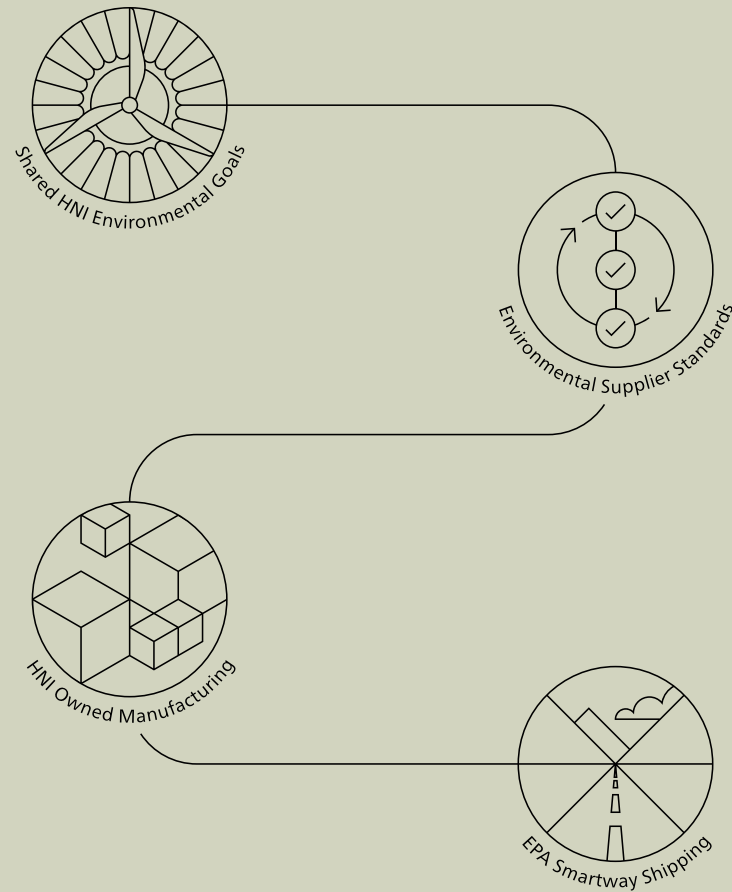
We prioritize transparency protocols to back our claims with science and empower our customers to make the decisions that are better for their specific goals.



- Drive improvements and increased transparency through our supply chain
- Plan for replaceable parts and make them available to repair existing products
- Build multi-use functionality into products so they can be redeployed in new ways when end users' needs change—not tossed out
- Make disassembly diagrams publicly available so end users can put the right components in the right recycling streams
- Enable our customers to use ANEW, a nonprofit that helps repurpose office furniture to help charitable organizations

Better Impact

Better impact means we've designed sustainable ambition and accountability into our operations and supply chain partnerships.



The majority of our products are shipped using efficient EPA SmartWay partners. We can also accommodate shipping by rail, which has fewer environmental impacts.

We hold our suppliers to high ethical standards and we are driving more rigorous environmental standards through the criteria we have embedded into our Design for Environment process.

We're achieving goals that will make a difference for the world in which we live, work, and play. By pursuing zero waste and reducing scope 1, 2, and 3 emissions, the planet will be healthier, and humans everywhere prosper.

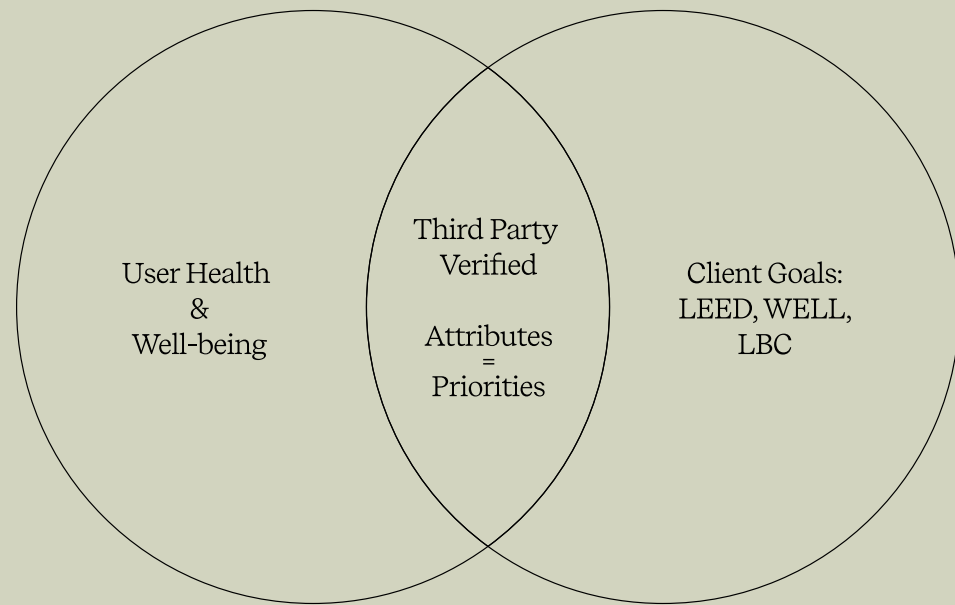
Our manufacturing facility footprint enables enhanced process transparency.

- We own many of our facilities, giving us direct line of sight into sourcing and process decisions
- We measure and manage energy use, greenhouse gas emissions, waste generation, water use, and other aspects in each of our facilities



Better Experience

Better experience means that Allsteel solutions are designed to do better for people.



We align our efforts with our clients' build-out goals, pursuing certifications that impacts decisions for the here and now as well as the future. Through a healthier portfolio, the built experience will be better, empowered by health, safety, diversity, and productivity.

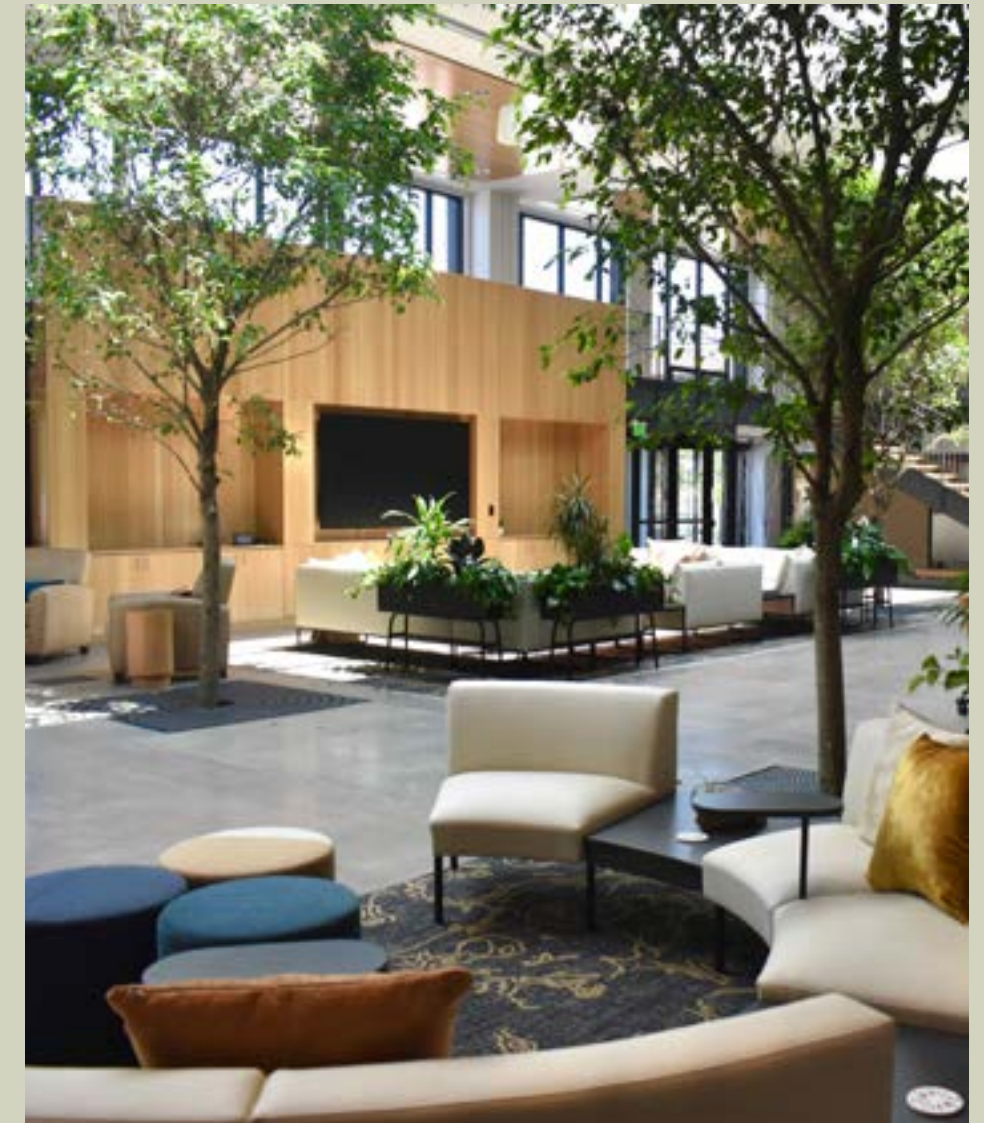
Our customers and their end users can better meet their green building goals through our growing collection of architectural and furniture products that earn credits toward LEED, WELL, the Living Building Challenge, and other building rating systems.



Customers can specify attributes that they prioritize. For some, that might mean choosing flame retardants and antimicrobials to help protect end users. For others, that might mean the opposite: they can specify versions of Allsteel products without chemicals like flame retardants, stain repellents, antimicrobials, or PVC.

We pursue third-party certifications to provide assurance around our contributions to good indoor air quality and safe, sustainable materials.

- Earn SCS Indoor Advantage Gold for 89% of Allsteel and Gunlocke products
- Allsteel and Gunlocke have 117 BIFMA Level certified products
- Design for compliance with Healthier Hospitals V2.0 criteria—about 75% of Allsteel and Gunlocke products meet criteria
- Choose FSC Certification for many wood-based materials

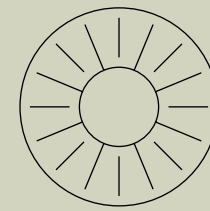




Environmental Goals

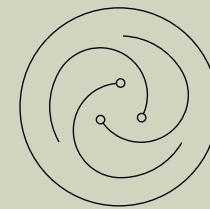
We do our part to meet these HNI environmental goals:

[2022 CSR Report →](#)



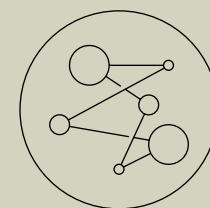
Climate

- Source 100% renewable electricity for our operations (goal achieved each year)
- Reduced absolute combined Scope 1 and 2 GHG emissions by 35% from a 2018 baseline (achieved in 2020)
- Reduce Scope 3 GHG emissions 40% per ton of goods sold by 2035 from a 2018 baseline (supplier engagement and R&D focused on lower embodied carbon/carbon-negative materials will help us meet this goal)
- Reduce energy intensity 50% by 2035 from a 2018 baseline
- As of 2020, reduced electricity use per unit of production by 30% compared to 2012
- Continue improving water use efficiency
- Reduced total water consumption by 30% between 2018 and 2020, saving over 45 million gallons



Circularity

- Achieve zero waste to landfill for all facilities by 2030
- Oak Steel facility in Muscatine, Iowa (which serves several HNI brands including Allsteel), achieved more than 90% waste diversion in 2020
- As of 2022, removed more than 47% (representing over 7 million pounds) of Styrofoam from packaging across HNI brands
- Eliminate Styrofoam and move to 100% recyclable packaging by the end of 2025



Chemical

- Evaluate 100% of materials and chemical substances in our products for human and ecosystem impacts by 2025 — and then minimize those impacts through Design for the Environment (DfE)

Sustainable Products





Sustainable Products

Compared to drywall, Architectural Products allow for reuse and reconfiguration throughout the lifespan of the building, making it a better choice when designing with the building's lifecycle in mind.



Beyond[®] + Aspect[®]

Architectural Products

[Explore Architectural Products →](#)

[View Certifications →](#)

The primary components of our Architectural Products (aluminum, steel, and zinc) are readily recyclable at the end of life and glass can be recycled through a specialty recycler.



Beyond and Aspect glass walls let in more natural light than traditional drywall, which helps increase wellness in the workplace.

Beyond and Aspect have achieved Declare Label, a disclosure that serves as the nutrition label for building products. This certification represents product chemical transparency, making it easier for specifiers to identify products that support human and environmental health.

Beyond® + Aspect® Certifications



O6™



O6 was thoughtfully designed to incorporate over 20% recycled content as the chair is constructed while also considering full lifetime of the components so that 64% are recyclable at the chair's end of life.

[Explore O6 →](#)

[View Certifications →](#)





The structural seat pan of O6 is made from reclaimed wood. Increase the impact by selecting a sustainably certified fabric option from our standard or partnership offering.

O6 Certifications



Sustainable Products



The back of the O6 task chair is adhesive-free, making it easy to disassemble and recycle at end of life. The chair's mesh is also recyclable at the end of its life and is made from 20% post-consumer recycled polyester.



Silea™

Silea fulfills the key sustainability features that are the foundation for all Gunlocke furniture, including FSC certifications, recycled materials use, and commitments to renewable resources. Silea contains anywhere between 22-24.1% post-consumer recycled content and 52.5-54.4% pre-consumer recycled content.



[Explore Silea Workspaces →](#)

[View Certifications →](#)

In a typical private office configuration, approximately 70% of raw materials are used in the final product with 30% left as waste. Out of the total wasted produced, 95% is scrap wood waste or saw dust which is diverted from landfills. This renewable bio-mass material is used to generate steam for manufacturing processes. The remaining 5% is recycled or re-used wherever feasible.



When sourcing materials, the particle board, many hardwoods and veneer materials are extracted within 500 miles of our factory and are considered regional materials.

Silea Certifications





Sustainable Products

In our ongoing effort to foster environmental stewardship, Allsteel has partnered with SEAQUAL INITIATIVE to repurpose reclaimed marine plastics into fabrics.

Now available on most of Allsteel's award-winning seating and many other solutions, our customers depend on every day, SEAQUAL's textiles are made with 100% post-consumer materials. They're not only breathing new life into everyday spaces, they're helping save the planet, one Allsteel solution at a time.



SEAQUAL[®] Textiles

[Explore SEAQUAL →](#)

Founded in 1956, the Stanley Center was the brainchild of Max and Betty Stanley, who gained a deep interest in global harmony and safety as a result of experiencing both world wars.

Client Highlight:

Stanley Center





Understanding the Stanley Center's global mission and deep-seated values, Neumann Monson Architects introduced to them the concept of the Living Building Challenge (LBC) as part of their workplace design efforts. Considered the world's most rigorous proven-performance standard for buildings, the LBC requires that certified Living Buildings must produce all their own energy and be self-sufficient, create a positive impact on the human and natural systems that interact with them, and connect occupants to light, air, food, nature, and community.

Opened for occupancy in January of 2023, the Stanley Center generates all its electricity through solar panels, captures the rainwater that falls on site for use as potable water, features biophilia throughout its space, and offers daylight access for every office.

In addition, every individual office was designed to be the same size, further demonstrating the organization's dedication to equity and inclusivity. Allsteel's Beyond® Architectural Products were also incorporated throughout the building to both foster and represent the values of openness and transparency.



“A Living Building is one that gives back more than it takes.”

Mark Seaman, Vice President and Director of Communications at the Stanley Center



Certifications

To help communicate our commitment to designing sustainable products, we offer products that have been third-party certified and contribute to sustainability-related programs.

Product Certifications



Declare.

Product certifications provide transparency to our clients to achieve their building goals or certifications while also serving as a measurement to hold ourselves accountable to our sustainability commitments.

[View Product Certifications →](#)